



# BENETTI 50





## BENETTI 50

**BUILDER :** Benetti

**MODEL:** 50

**YEAR:** 2021

**ENGINES :** 2 x MAN 1400 cv

**LENGTH:** 49.90 M

**CABINS:** 5

The Benetti 50 'Iryna' is a 50-metre luxury yacht built by the renowned Italian shipyard Benetti in 2021. This magnificent vessel is part of the B.Now series and stands out for its elegant design, vast spaces and luxurious fittings.

- **Refined design and generous space:** combining the exterior elegance of RWD with Benetti's spacious, light-filled interiors.
- **Luxurious accommodation for up to 10 guests:** 5 sumptuous staterooms, including a full-beam owner's suite for maximum comfort.
- **Unique Oasis Deck experience:** innovative aft platform with folding bulwarks and integrated swimming pool for privileged contact with the sea.
- **Power and range:** reliable MAN engines for comfortable cruising speed and long range for long crossings.
- **First class equipment and service:** modern technology, a garage for a tender and a crew of 9 guarantee exceptional service.

**PRICE: 32 000 000 € Vat not paid**



























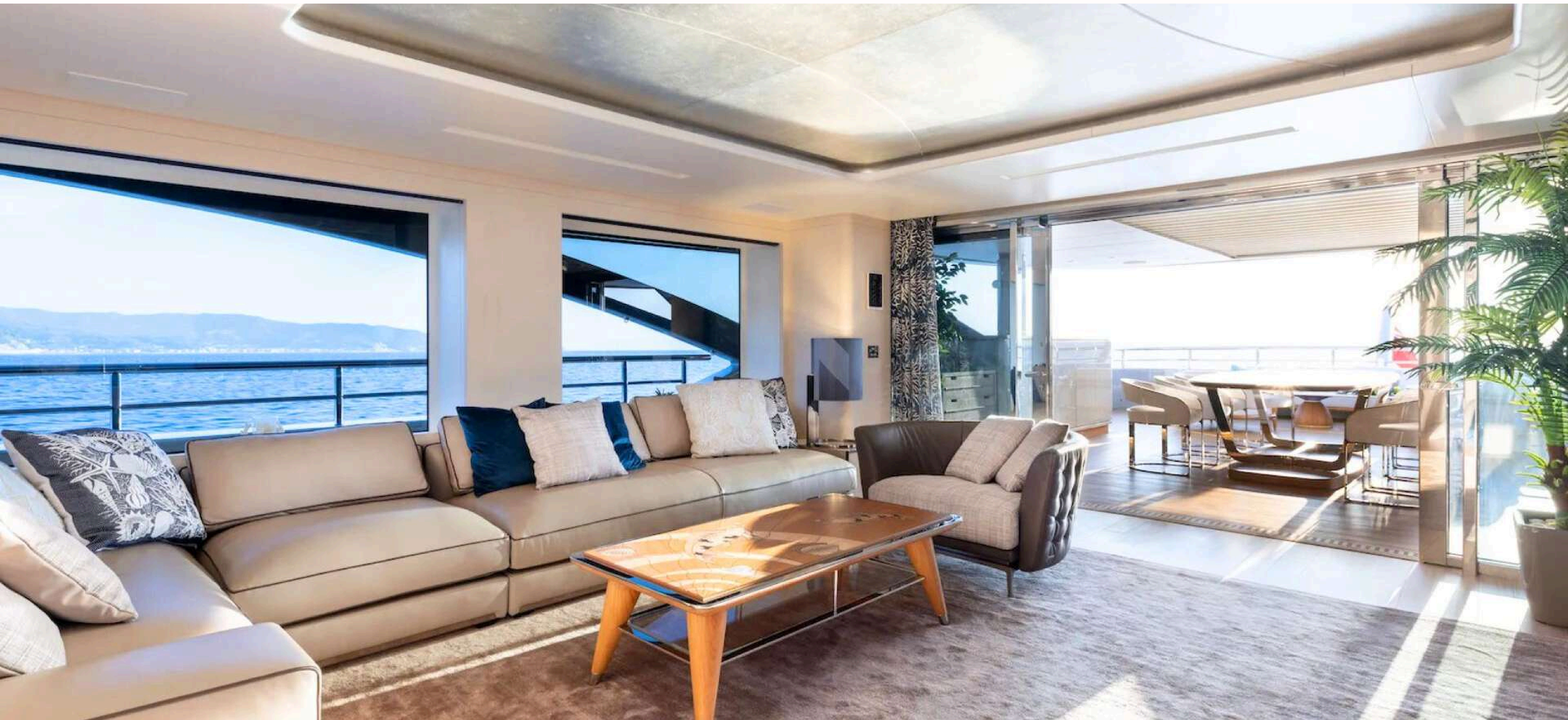












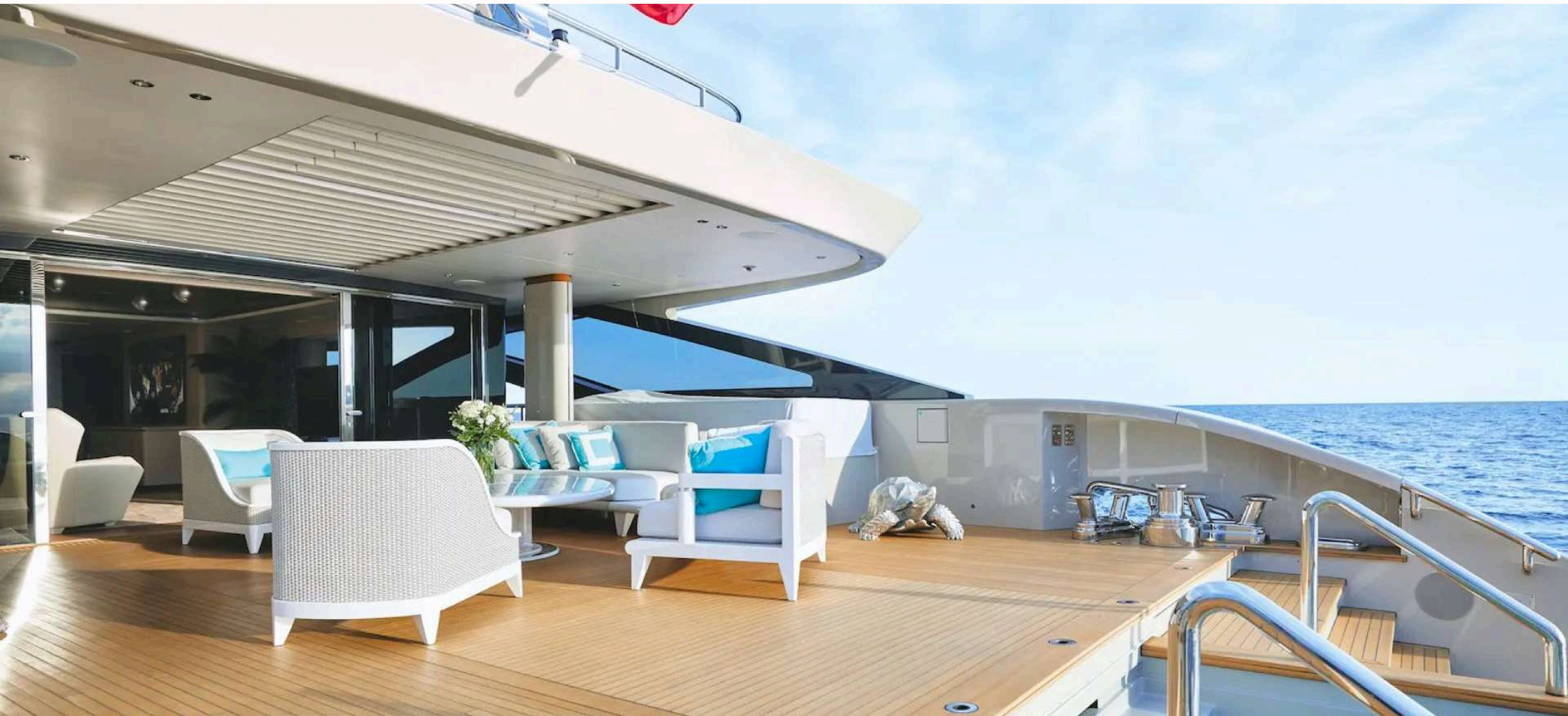








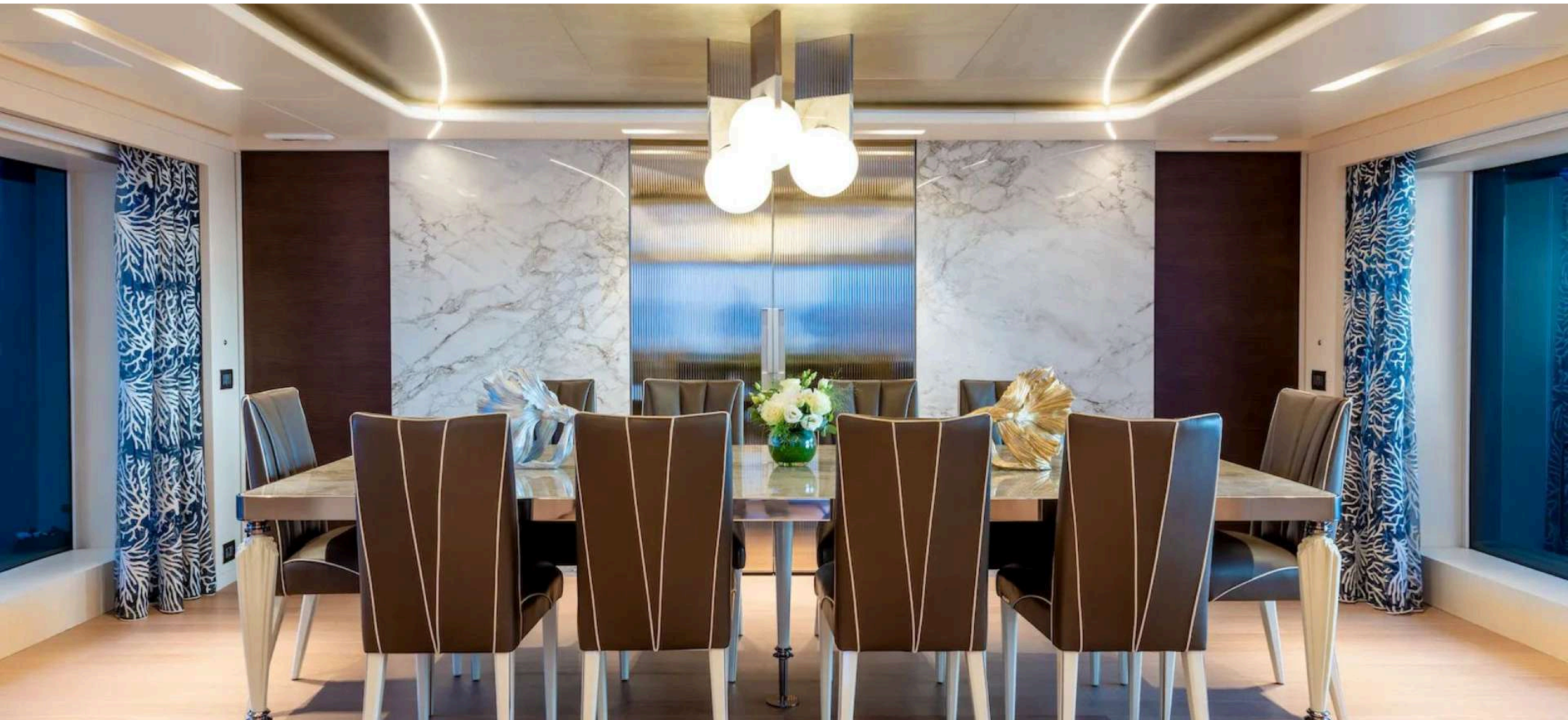








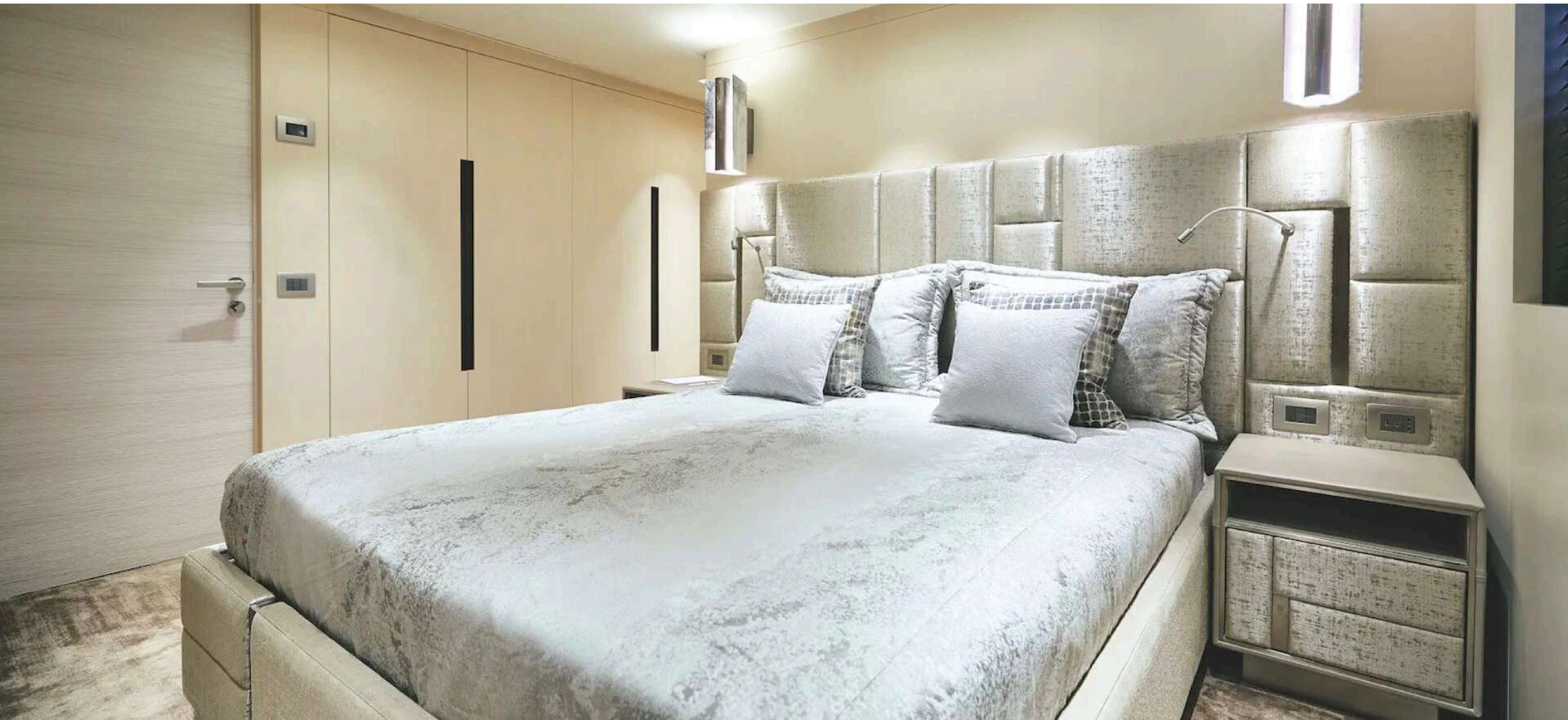




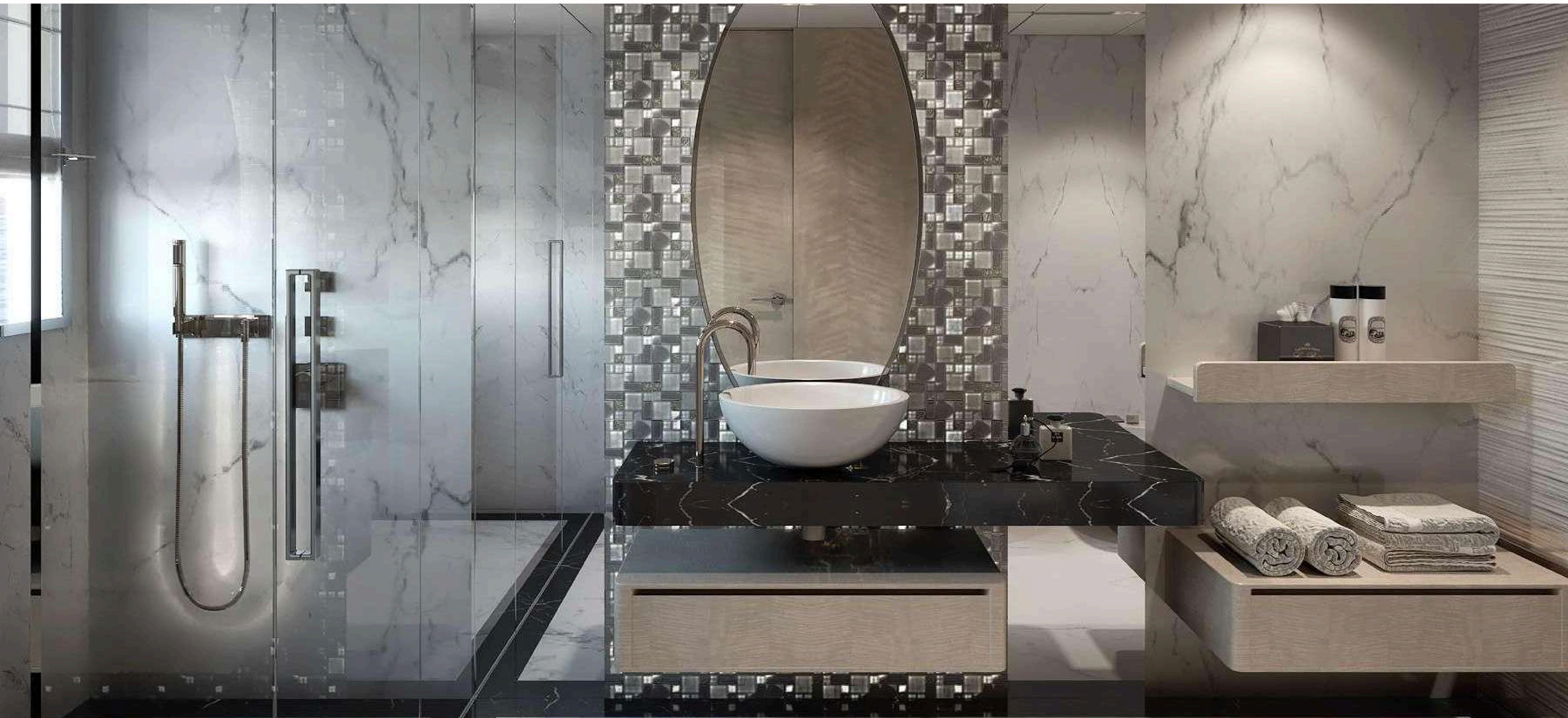






















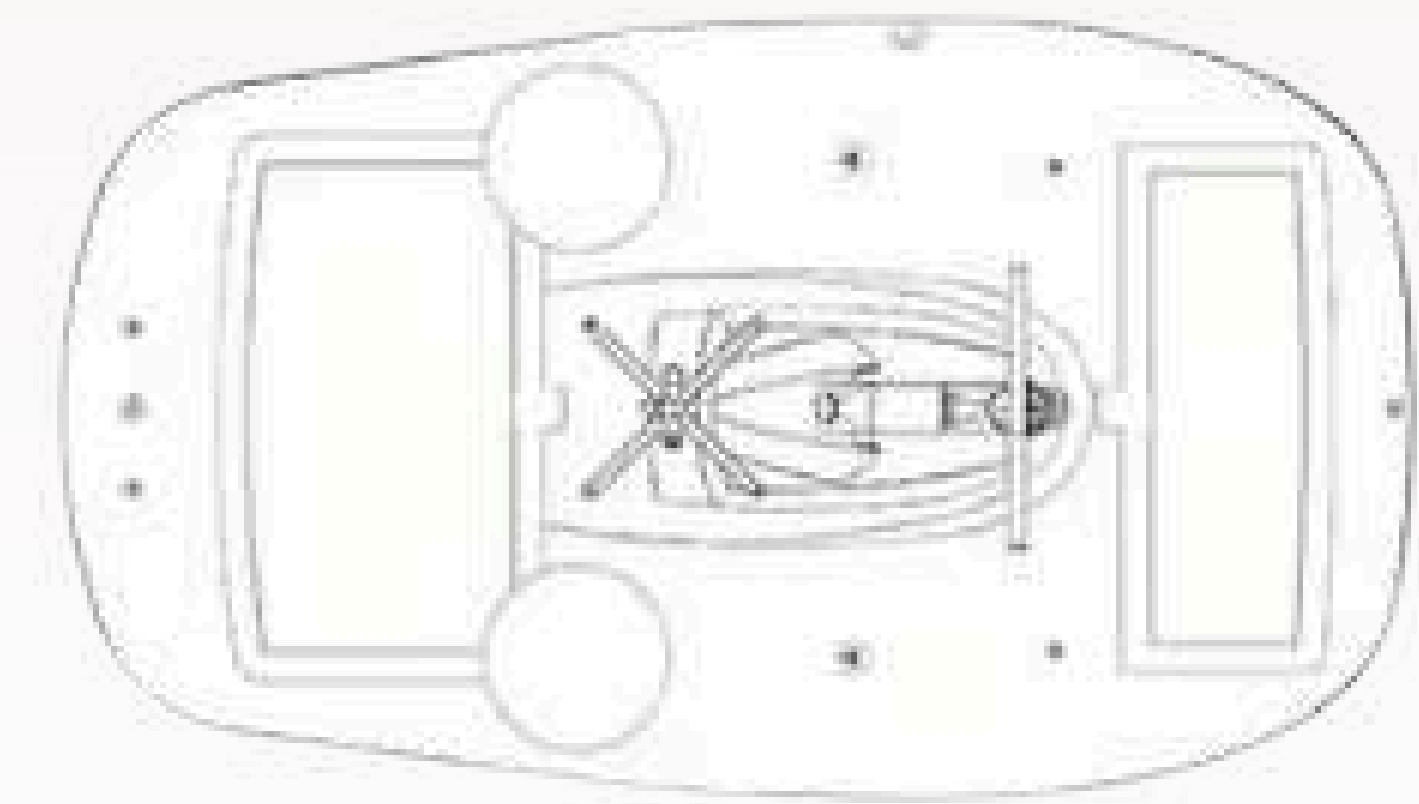
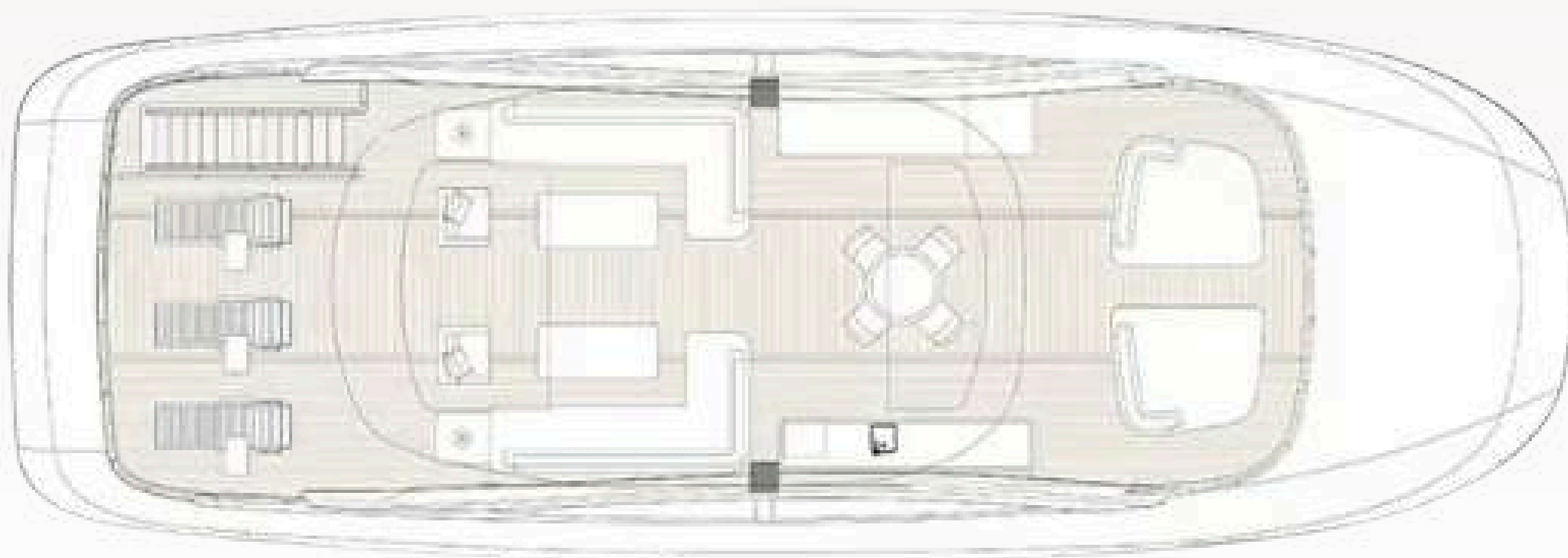
## LAYOUT



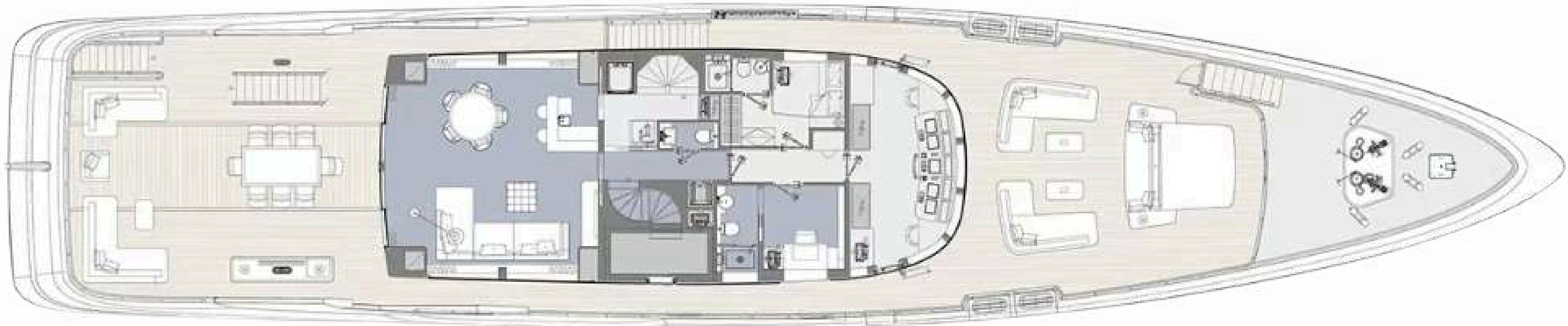


## LAYOUT

**SUNDECK**



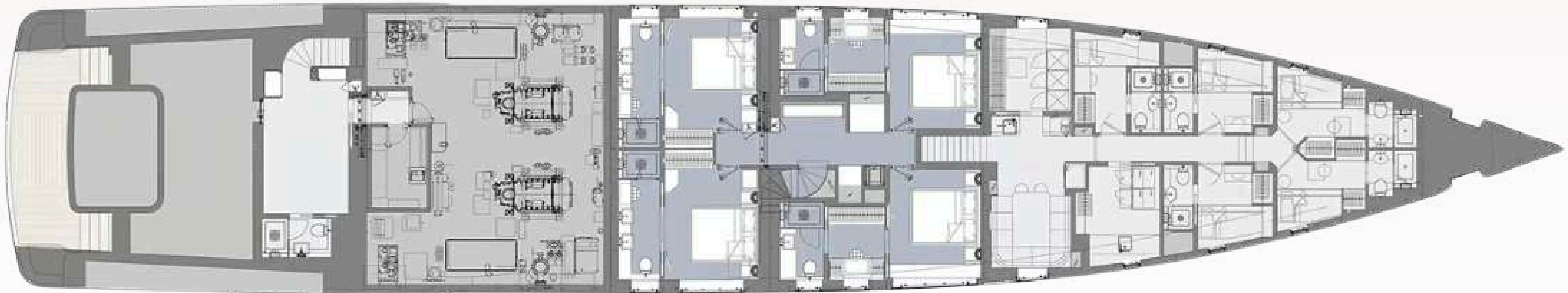
**UPPER DECK**





## LAYOUT

LOWER DECK



MAIN DECK





## SPECIFICATIONS

**BUILDER :** Benetti

**CRUISE SPEED :** 12 Kt

**MODEL :** 50

**MAX SPEED :** 15 Kt

**YEAR:** 2021

**GUESTS CABINS :** 5

**HULL / SUPERSTRURE MATERIAL :** Steel / Aluminium

**MAX GUESTS CAPACITY :** 12

**LENGTH :** 49.90 M

**MAX GUESTS SLEEPING :** 10

**BEAM :** 9 M

**CONSUMPTION :** 160 L / H @ 12 Knots

**DRAFT :** 2.60 M

**AUTONOMY :** 4500 NM

**NAVIGATION CLASS :** A

**FUEL TANK CAPACITY :** 62 000 L

**CLASSIFICATION:** RINA

**WATER TANK :** 13 000 L

**FLAG:** UK

**BLACK WATER TANK :** 5800 L

**GROSS TONNAGE :** 499 GT

**BOW AND STERN THRUSTER:** Yes



## MOTORISATION

**Engines:** 2 x MAN V 12 D2862LE446 1380 HP

**Engines hours:** 1341 H

**Propulsion:** Shaft Drive, Gearbox ZF 3311

**Fuel:** Diesel

**Propellers:** 5 Blades

## NAVIGATION EQUIPMENT

**GPS:** Furuno GP-170

**VHF:** Furuno FM-8900s

**Wind Indicator:** AIRMAR 110WX

**Radar:** Furuno S-Band, X-Band

**Depth sounder:** Furuno FE-8010

**Autopilot:** Simrad AP80

**Speedmeter:** Simrad AP80

**Compas:** Sperry Navigat 100

## EQUIPMENT

**Generator:** 2 x Kohler 125EFOZDJ 125 Kw

**Generator hours:** 3000 H

**Air conditioning:** Domotic Tropical Air Conditioning

## SAFETY EQUIPMENT

**Life raft:** 2 x Survitec Zodiac XTREM 11 people

**Bilge pump:** EPIRB : Ocean Signal Safe Sea 100

## DECK EQUIPMENT

**Anchor Windlass:** 2 x OPEM SISTEMI ASLG67-16X

**Mooring Winch:** 2 x OPEM SISTEMI ATLG15-170X

**Anchor Chain :** Starbord 150 Meters / Port 125 Meters

**Anchors :** 2 x 306 KG Stainless Steel

**Gangway:** TECNIMPIANTI hydraulic

**Swimming Pool :** 5800 L with heating system

## GALLEY AND LAUNDRY EQUIPMENT

**Fridge:** 2 x Miele KS4383

2 x Miele K7116

1 x Liebherr FKUv 1660

**Freezer:** 2 x Miele KFP 3634

**Oven:** Rational iCombi Pro

**Microwave:** Miele M7240

**Icemaker :** Hoshizaki

**Wine Cellar :** Miele KWT

**Dishwasher :** 2 x Siemens

**Steam Oven :** Miele DGC7840

## AUDIO & TV EQUIPMENT

**Audio :** Stereo system with Bowers&Wilkins speakers in every area

**TV:** 4 x TV Samsung 43" UHD QLED

4 x TV Samsung 55" UHD QLED

3 x TV Samsung 65" UHD QLED

1 x TV Samsung 75" UHD QLED





Aquila Yachting  
29 Port Camille Rayon 06220 Golfe Juan FRANCE  
[www.aquilayachting.com](http://www.aquilayachting.com)

Contact: +33(0)6 34 04 67 33  
Mail: [alexandre.filonoff@aquilayachting.com](mailto:alexandre.filonoff@aquilayachting.com)

